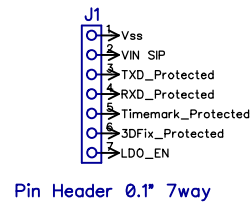
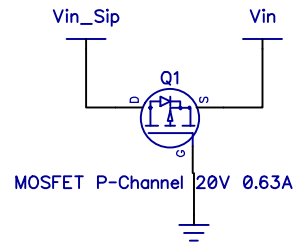


Power Supply and Connectors

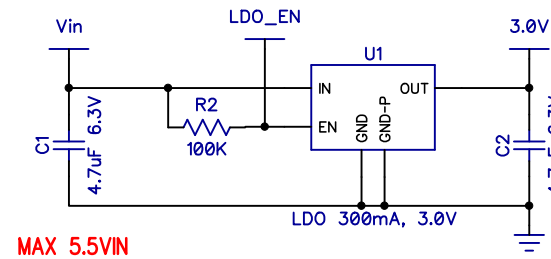
3.3V to 5V



Reverse Polarity Protection



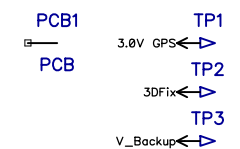
3V LDO Regulator



Mounting holes



Test & Mfg



Parallax Inc.
599 Menlo Drive
Rocklin, CA 95765

(916) 624-8333
<http://www.parallax.com/>

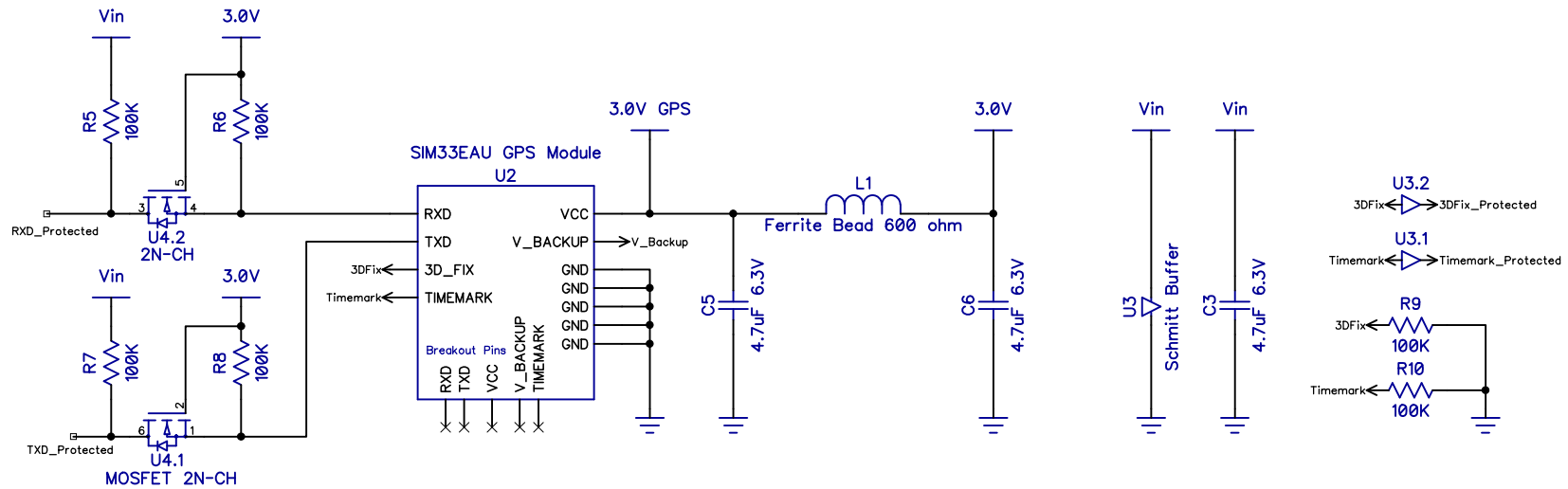
SIM33EAU GPS Module

Copyright 2019 Parallax Incorporated. All Rights Reserved.
This is Open Source Hardware. This work is licensed under a Creative Commons Attribution-ShareAlike 4.0 International License. The full text of the license is available from: <http://creativecommons.org/licenses/by-sa/4.0>

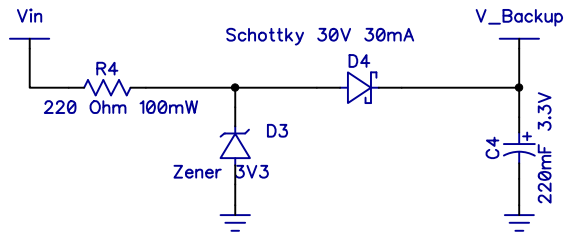
Part Number: 28504
Revision: A

Last Update: 13 May 2019 (MM)

SIM33EAU GPS Module

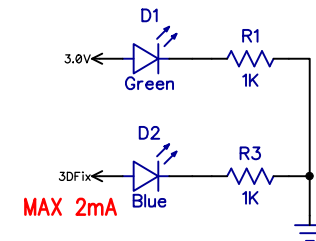


Supercapacitor Charger



Max 30mA charge current
 V_Backup, min=2.3V, max=3.3V

Status LEDs



Parallax Inc.
 599 Menlo Drive
 Rocklin, CA 95765

(916) 624-8333
<http://www.parallax.com/>

SIM33EAU GPS Module

Copyright 2019 Parallax Incorporated. All Rights Reserved.
 This is Open Source Hardware. This work is licensed under a Creative Commons Attribution-ShareAlike 4.0 International License. The full text of the license is available from: <http://creativecommons.org/licenses/by-sa/4.0>

Part Number: 28504
 Revision: A

Last Update: 13 May 2019 (MM)

BOM

RefDes	Quantity	Value	Name	Manufacturer
C1, C2, C3, C5, C6	5	4.7uF 6.3V	200-01049 : CAP-CER,4.7uF,X5R,6.3V,0402	TDK : C1005X5R0J475M050BC
C4	1	220mF 3.3V	200-10306 : SUPERCAP 220MF 3.3V SMD	Elna : DSK-3R3H224U-HL
D1	1	Green	350-10003 : LED 0603, Green Clear	Lite-On : LTST-C191KGKT
D2	1	Blue	350-10004 : LED 0603, Blue Clear	Lite-On : LTST-C190TBKT
D3	1	Zener 3V3	501-10026 : Diode,Zener,3.3V,SOD323	ON Semi : MM3Z3V3ST1G
D4	1	Schottky 30V 30mA	501-10008 : Diode,Schottky,40V,30mA	OnSemi : RB751S40T1G
J1	1	Pin Header 0.1" 7way	450-00143 : CON-HDR,1X7,RA,SMT	SAMTEC : TSM-107-02-L-SH-K
L1	1	Ferrite Bead 600 ohm	275-10051 : Ferrite Bead,300mA,600Ohm,0402	Samsung : CIM05U601NC
MH1, MH2	2	Mounting Hole Vss	Empty	Empty
PCB1	1	PCB	300-28504 : Raw PCB - SIM33EAU GPS	
Q1	1	MOSFET P-Channel 20V 0.63A	500-10033 : MOSFET P-CH 20V 0.63A SOT-323	Infineon : BSS209PWH6327XTSA1
R1, R3	2	1K	173-10002 : RES,1K,5%,0402	Stackpole : RMCF0402JT1K00
R2, R5, R6, R7, R8, R9, R10	7	100K	150-11052 : Res,100k,0402	Yageo : RC0402JR-07100KL
R4	1	220 Ohm 100mW	150-11045 : RES,220,5%,0603	Panasonic : ERJ-3GEYJ221V
TP1, TP2, TP3	3	Test Point	Empty	Empty
U1	1	LDO 300mA, 3.0V	601-10601 : IC-REG,LDO,3.0V,UDFN4	OnSemi : NCP114AMX300TCG
U2	1	SIM33EAU GPS Module	640-28504 : SIM33EAU GPS Sensor 9600 BD	SIMCOM : SIM33EAU
U3	1		603-10024 : IC,Buff,Dual,6TSSOP,NC7WZ17P6X	OnSemi : NC7WZ17P6X
U4	1	MOSFET 2N-CH	500-10032 : MOSFET,N,Dual,220mA,30V,6TSSOP	Diodes Inc : DMN63D8LDW-7
	33			

Parallax Inc.
599 Menlo Drive
Rocklin, CA 95765

(916) 624-8333
<http://www.parallax.com/>

SIM33EAU GPS Module

Copyright 2019 Parallax Incorporated. All Rights Reserved.
This is Open Source Hardware. This work is licensed under a Creative Commons Attribution-ShareAlike 4.0 International License. The full text of the license is available from: <http://creativecommons.org/licenses/by-sa/4.0>

Part Number: 28504
Revision: A

Last Update: 13 May 2019 (MM)