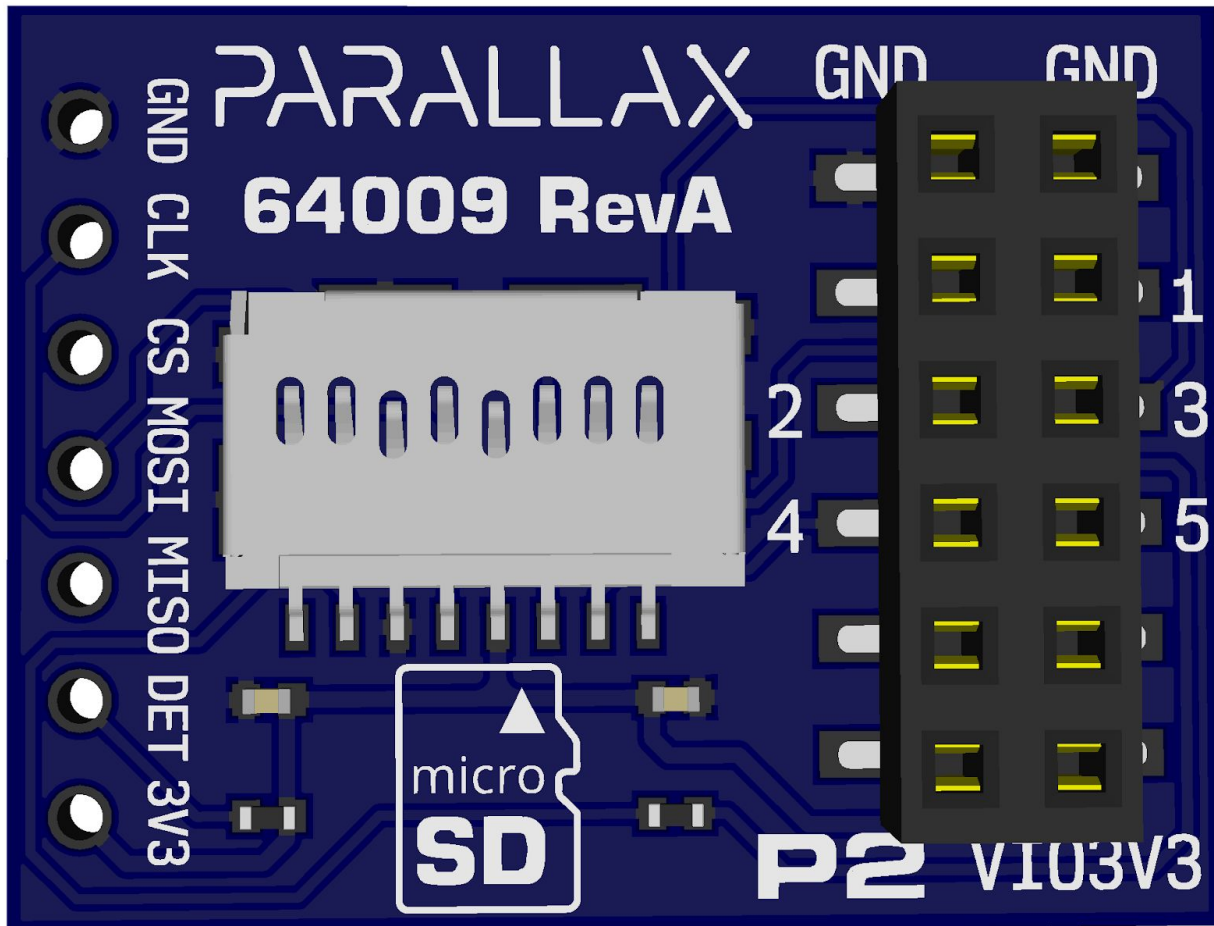


## P2 microSD Add-on Board (#64009)



This adapter provides a convenient way to connect a microSD card to the Parallax Propeller P2 microcontroller, and optionally to any other microcontroller or breadboard project.

The adapter connects a microSD card to any P2 development board with a standard 2x6 way accessory header. Connecting this accessory to any P2 accessory header allows for general data read/write capabilities (such as data logging or reading program data). Connecting this accessory to the special P2 programming header (IO pins 56-63) would also allow booting from a firmware image stored on the microSD card.

The adapter also has seven 0.1" pitch through-hole pads which provide connection to all of the microSD card signals, and accept a standard vertical or right-angle pin header (not supplied) for connection to other microcontrollers or breadboards, such as for the Parallax FLiP try-it kit.

## Features

- Connects a microSD card (not included) to the Propeller 2 Accessory Header
- Allows booting from a binary firmware file saved on the microSD card when connected to the P2 programming header (IOs 56-63)
- Connect to any 2x6 way accessory header for general data reading and writing
- Unpopulated pads allow access to all the microSD card power and control signals, handy for attaching logic probes, or connecting the adapter to a breadboard and/or other microcontroller.

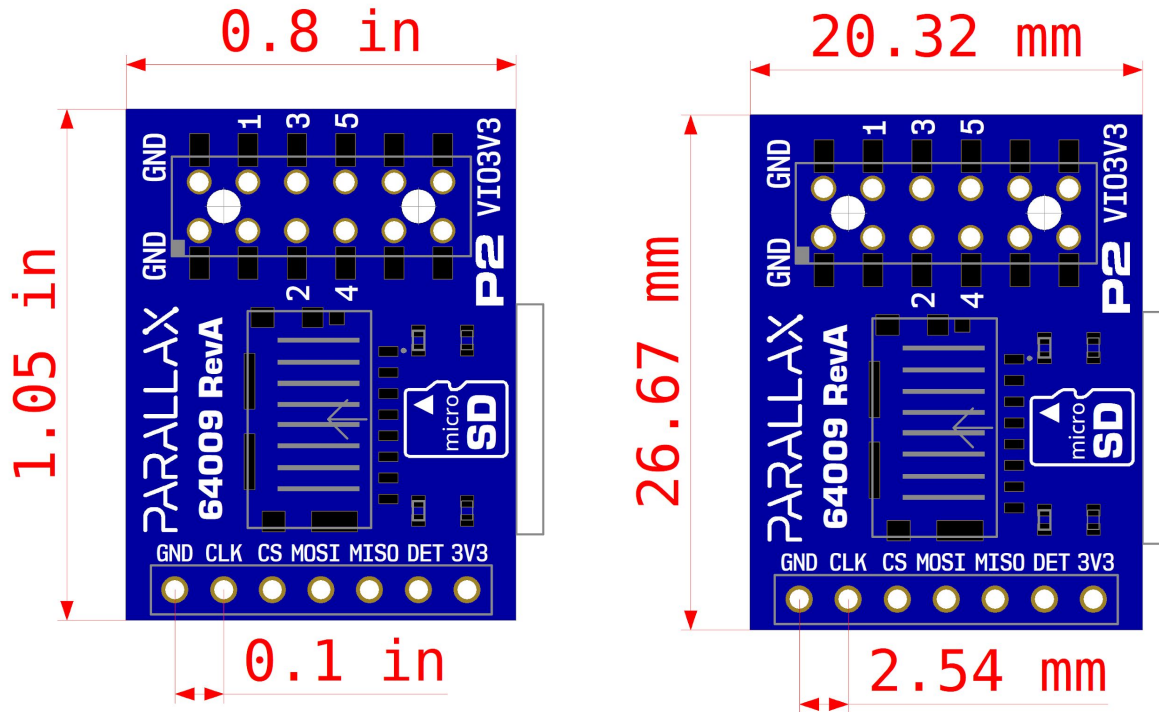
## Specifications

- 2x6 female socket with 0.1" spacing compatible with the standard Parallax P2 Accessory sockets
- Unpopulated 7-pin SIP through-hole pads with 0.1" spacing for access to the microSD card signals: 3V3, DET, MISO, MOSI, CS, CLK and GND
- PCB Dimensions: 0.8 x 1.05 in (20.32 x 26.67 mm)
- Operating temperature: -40 to +185 °F (-40 to +85 °C)

## Pin Connections

| Accessory header pin | SIP breakout pad | Function  |
|----------------------|------------------|---|
| VIO3V3               | 3V3              | Supply voltage to microSD card <ul style="list-style-type: none"><li>- 3.3V voltage required to power the microSD card</li><li>- Do not supply power to both the accessory header pin and SIP breakout pad at the same time</li></ul> |
| 5V                   | N/C              | Supply voltage from P2 accessory header <ul style="list-style-type: none"><li>- Not Connected and Not Labelled</li></ul>  |
| +7, +6, +0           | N/C              | Not Connected   |
| +5                   | CLK              | Connects to SD-CLK  |
| +4                   | CS               | Connects to SD-CS (CD/DAT3/CS)  |
| +3                   | MOSI             | Connects to SD-DI (CMD/MOSI)  |
| +2                   | MISO             | Series 240R from SD-DO (MISO) <ul style="list-style-type: none"><li>- Resistor provided for P2 boot compatibility</li></ul>   |
| +1                   | DET              | Card detect<br>Internal 470K pull-up to 3V3, active low when card inserted  |
| GND                  | GND              | Common Ground reference connection  |

## Dimensions



## Resources and Downloads

Check for the latest version of this document and the schematic diagram from the P2 microSD Accessory product page. Go to [www.parallax.com](http://www.parallax.com) and search 64009.

## Revision History

Version 1.0: Original release.