

FTDI USB Virtual Com Port (VCP) Driver

Installation Instructions for Windows XP

These instructions pertain to the following Parallax USB products:

- USB Board of Education Development Board #28850
- Professional Development Board #28138
- Parallax USB Oscilloscope #28014
- FTDI US232B USB to Serial Adapter #800-00030
- USB2SER Development Tool #28024
- BS1USB Microcontroller Module #BS1USB

Throughout the text the term "USB device" is used for any of the products listed above.

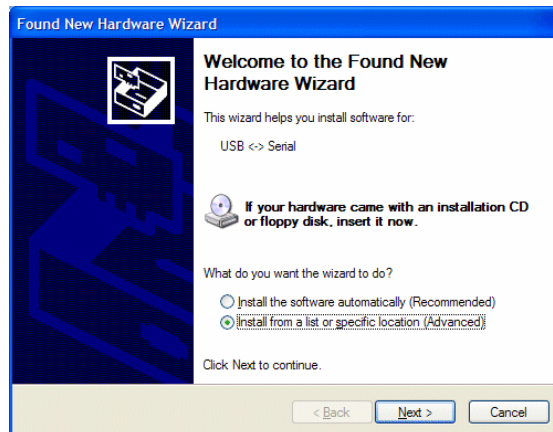
1. Obtain the FTDI USB VCP drivers. They are available on the Parallax CD (October 2004 or later), or the very latest versions can be obtained as a download via the Internet from your USB device's product page. Just substitute your device's part number for the last digits in this address:

http://www.parallax.com/detail.asp?product_id=28850

2. Copy (if using the Parallax CD) or unzip (if downloaded) the driver files to a temporary folder that is easy to locate on your system. For the purposes of these instructions we will use the folder:

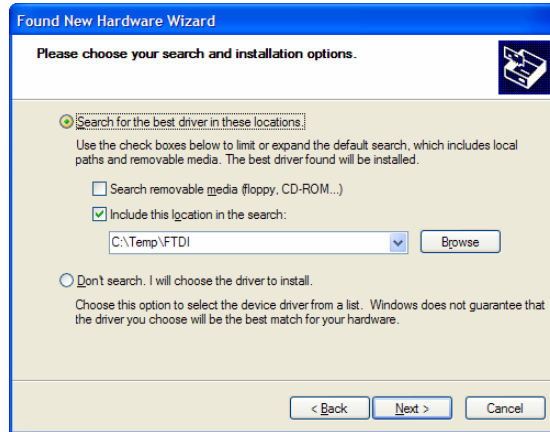
C:\Temp\FTDI

3. Plug the USB device into your system. A "Found New Hardware" message should appear, followed by the "Found New Hardware Wizard" dialog:

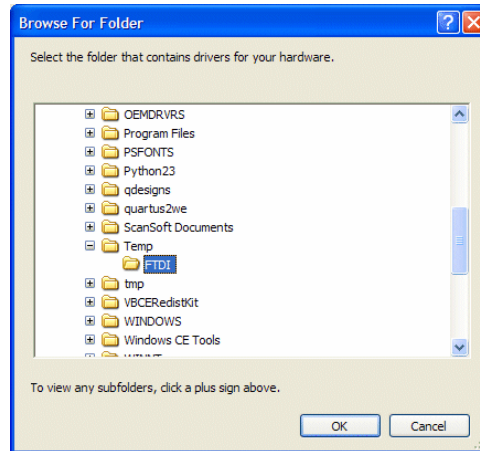


4. If you have a high-speed (live) Internet connection, select "Install the software automatically (Recommended)" and proceed as directed, otherwise select "Install from a list or specific location (Advanced)," click on the "Next" button, and follow the steps below.

5. Select "Search for the best driver in these locations," mark the checkbox next to "Include this location in the search:" and enter the path (as shown below)...



...or click the "Browse" button to find the folder where the driver files have been saved:



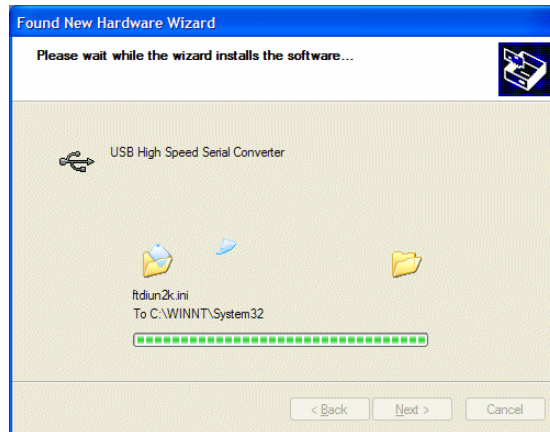
Select the target folder and then click "OK," then "Next" on the Wizard dialog.

6. Windows will search for the appropriate driver file(s) in the specified location. You may see the following dialog:

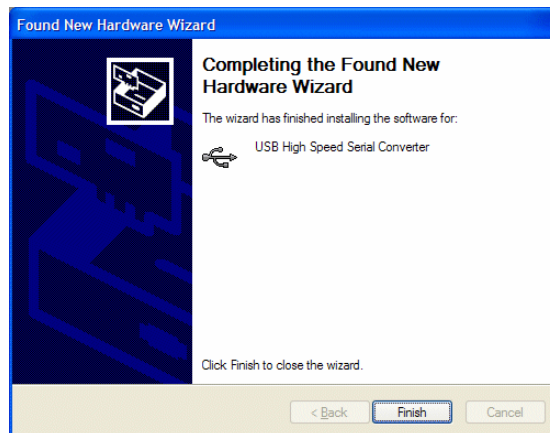


Click on the "Continue Anyway" button to proceed.

This dialog will be displayed as the appropriate files are installed:



When the installation is complete the following dialog will appear:

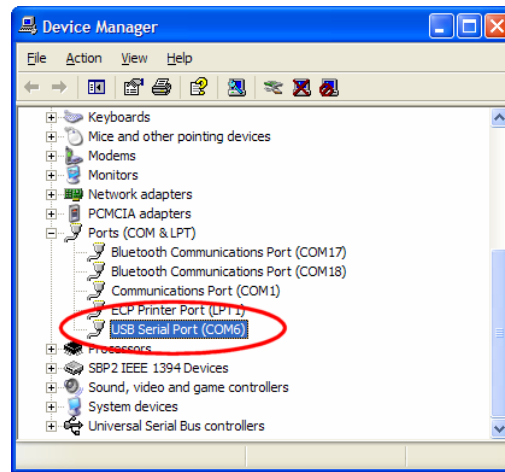


Click on the "Finish" button. If the "Found New Hardware Wizard" restarts, repeat steps 4 through 6 to complete the installation.

USB COM Port Identification

1. Click on "Start" button
2. Click on "Control Panel"
3. Double-click on "System" icon
4. Click on "Hardware" tab
5. Click on "Device Manager" button
6. Expand "Ports (COM & LPT)" tree by clicking on the [+] icon

The port will be listed as "USB Serial Port (COMx)" as shown below (Note that your COM port assignment may differ from the image below). Record your COM port number for programs that require manual assignment.



BASIC Stamp Users

Use **Run | Identify** in the BASIC Stamp® IDE to verify connection with the BOE-USB or PDB. You are now ready to use the BOE-USB or PDB to program and communicate with the BASIC Stamp.

Note that the Loopback column does not give reliable results when using a USB to serial adapter, or a USB-based development board. Usually this is not an error, and the Loopback status can simply be ignored.

Javelin Stamp Users

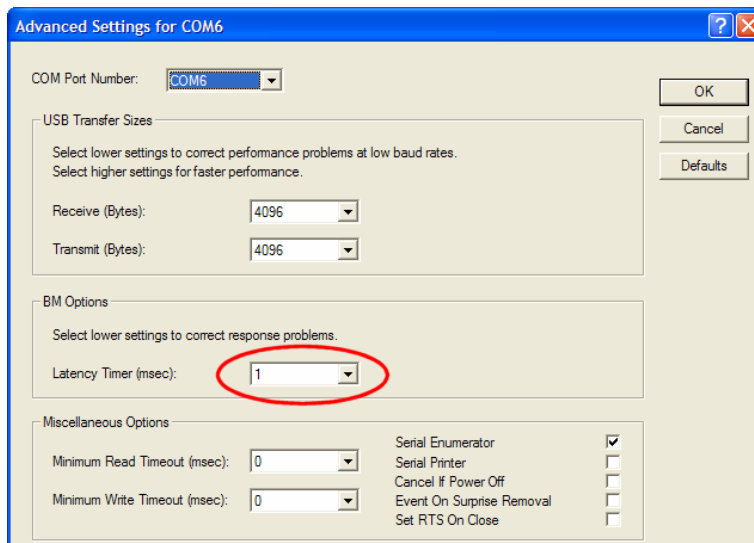
Use **Project | Identify** in the Javelin Stamp IDE to verify connection with the BOE-USB. You are now ready to use the BOE-USB to program and communicate with the Javelin Stamp.

Note that the Loopback column does not give reliable results when using a USB to serial adapter, or a USB-based development board. Usually this is not an error, and the Loopback status can simply be ignored.

Troubleshooting

Some installations may experience occasional connection problems that can be corrected through the VCP driver properties. The following steps should correct these connection problems.

1. Click on "Start" button
2. Click on "Control Panel"
3. Double-click on "System" icon
4. Click on "Hardware" tab
5. Click on "Device Manager" button
6. Expand "Ports (COM & LPT)" tree by clicking on the [+] icon
7. Right-click on the VCP serial port, then click Properties from the drop-down menu
8. In the Properties dialog, select the "Port Settings" tab, then click the "Advanced Settings" button
9. On the Advanced Settings dialog (below), reduce the value of the Latency Timer



Click "OK" to close the Advanced Settings dialog, then "OK" again to close the Properties dialog.