

# FTDI USB Virtual Com Port (VCP) Driver

## Installation Instructions for Windows 98

These instructions pertain to the following Parallax USB products:

- USB Board of Education Development Board #28850
- Professional Development Board #28138
- Parallax USB Oscilloscope #28014
- FTDI US232B USB to Serial Adapter #800-00030
- USB2SER Development Tool #28024
- BS1USB Microcontroller Module #BS1USB

Throughout the text the term "USB device" is used for any of the products listed above.

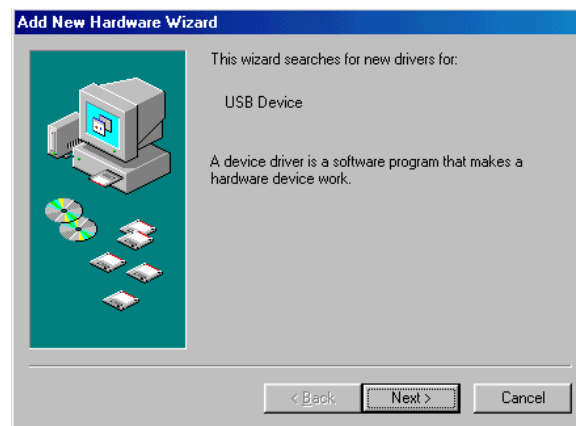
1. Obtain the FTDI USB VCP drivers. They are available on the Parallax CD (October 2004 or later), or the very latest versions can be obtained as a download via the Internet from your USB device's product page. Just substitute your device's part number for the last digits in this address:

[http://www.parallax.com/detail.asp?product\\_id=28850](http://www.parallax.com/detail.asp?product_id=28850)

2. Copy (if using the Parallax CD) or unzip (if downloaded) the driver files to a temporary folder that is easy to locate on your system. For the purposes of these instructions we will use the folder:

C:\Temp\FTDI

3. Plug the USB-BOE into your system. A "Found New Hardware" message should appear, followed by the "Add New Hardware Wizard" dialog.



Click on the "Next" button.

4. Ensure that "Search for the best driver for your device." is selected.



Click on the "Next" button.

5. Select "Specify a location" and type in the path (or use the "Browse..." button to locate the folder).



Click on the "Next" button.

6. Some systems may report that it cannot locate the drivers (see below).



If this happens, click on the "Finish" button and continue with the next step.

7. The "Add New Hardware Wizard" will restart, this time finding the "USB <-> Serial" device.



Repeat steps 4 and 5. When complete, you should see this dialog:



Click on the "Finish" button.

8. Verify the connection with your USB device:

### **BASIC Stamp Users**

Use **Run | Identify** in the BASIC Stamp<sup>®</sup> IDE to verify connection with the BOE-USB or PDB. You are now ready to use the BOE-USB or PDB to program and communicate with the BASIC Stamp. Note that the Loopback column does not give reliable results when using a USB to serial adapter, or a USB-based development board. Usually this is not an error, and the Loopback status can simply be ignored.

### **Javelin Stamp Users**

Use **Project | Identify** in the Javelin Stamp IDE to verify connection with the BOE-USB. You are now ready to use the BOE-USB to program and communicate with the Javelin Stamp. Note that the Loopback column does not give reliable results when using a USB to serial adapter, or a USB-based development board. Usually this is not an error, and the Loopback status can simply be ignored.