

## FTDI USB Virtual Com Port (VCP) Driver Installation Instructions for Windows 2K

These instructions pertain to the following Parallax USB products:

- USB Board of Education Development Board #28850
- Professional Development Board #28138
- Parallax USB Oscilloscope #28014
- FTDI US232B USB to Serial Adapter #800-00030
- USB2SER Development Tool #28024
- BS1USB Microcontroller Module #BS1USB

Throughout the text the term "USB device" is used for any of the products listed above.

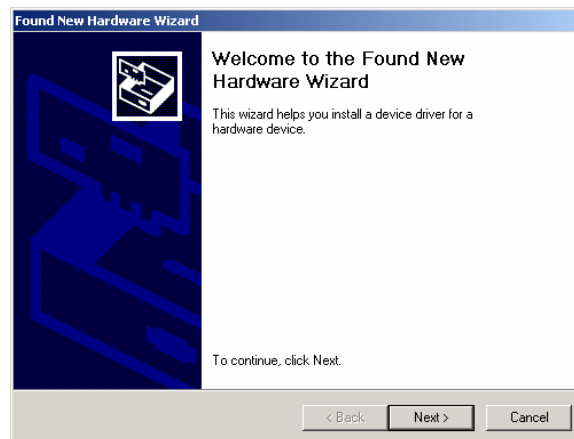
1. Obtain the FTDI USB VCP drivers. They are available on the Parallax CD (October 2004 or later), or the very latest versions can be obtained as a download via the Internet from your USB device's product page. Just substitute your device's part number for the last digits in this address:

[http://www.parallax.com/detail.asp?product\\_id=28850](http://www.parallax.com/detail.asp?product_id=28850)

2. Copy (if using the Parallax CD) or unzip (if downloaded) the driver files to a temporary folder that is easy to locate on your system. For the purposes of these instructions we will use the folder:

C:\Temp\FTDI

3. Plug the USB device into your system. A "Found New Hardware" message should appear, followed by the "Add New Hardware Wizard" dialog.



Click on the "Next" button.

4. Select "Search for a suitable driver for my device (recommended)".



Click on the "Next" button.

5. Select "Specify a location."

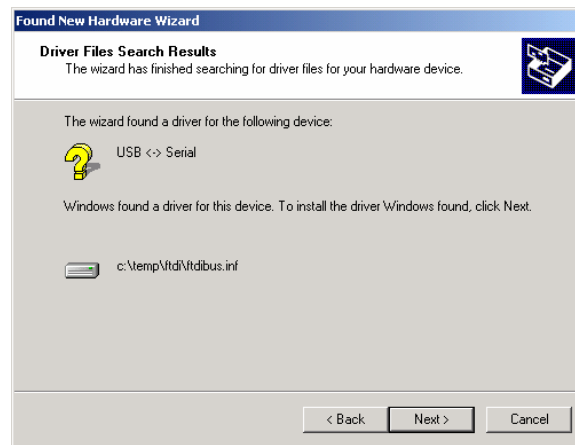


Click on the "Next" button.

6. Type in the path (or use the "Browse..." button).

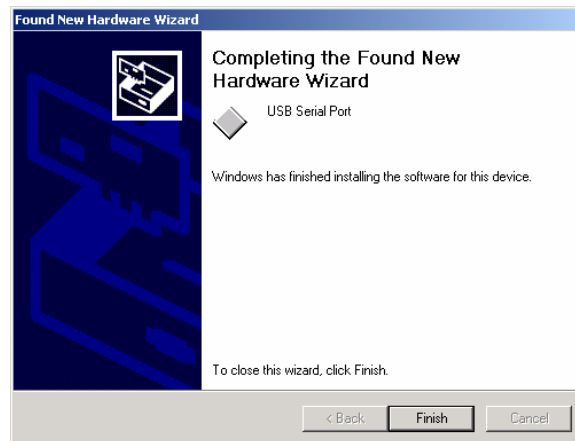


Click on the "OK" button. The following dialog should appear:



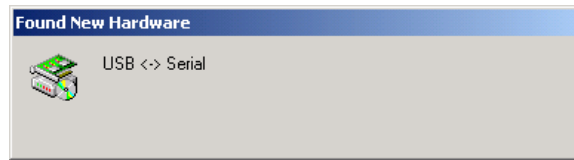
Click the "Next" button.

When complete the following dialog will appear:



Click the "Finish" button.

The "Add New Hardware Wizard" may restart, this time finding the "USB <-> Serial" device.



If this happens, repeat steps 3 through 6 to complete installation.

7. Verify the connection with your USB device:

#### **BASIC Stamp Users**

Use **Run | Identify** in the BASIC Stamp® IDE to verify connection with the BOE-USB or PDB. You are now ready to use the BOE-USB or PDB to program and communicate with the BASIC Stamp.

Note that the Loopback column does not give reliable results when using a USB to serial adapter, or a USB-based development board. Usually this is not an error, and the Loopback status can simply be ignored.

#### **Javelin Stamp Users**

Use **Project | Identify** in the Javelin Stamp IDE to verify connection with the BOE-USB. You are now ready to use the BOE-USB to program and communicate with the Javelin Stamp.

Note that the Loopback column does not give reliable results when using a USB to serial adapter, or a USB-based development board. Usually this is not an error, and the Loopback status can simply be ignored.