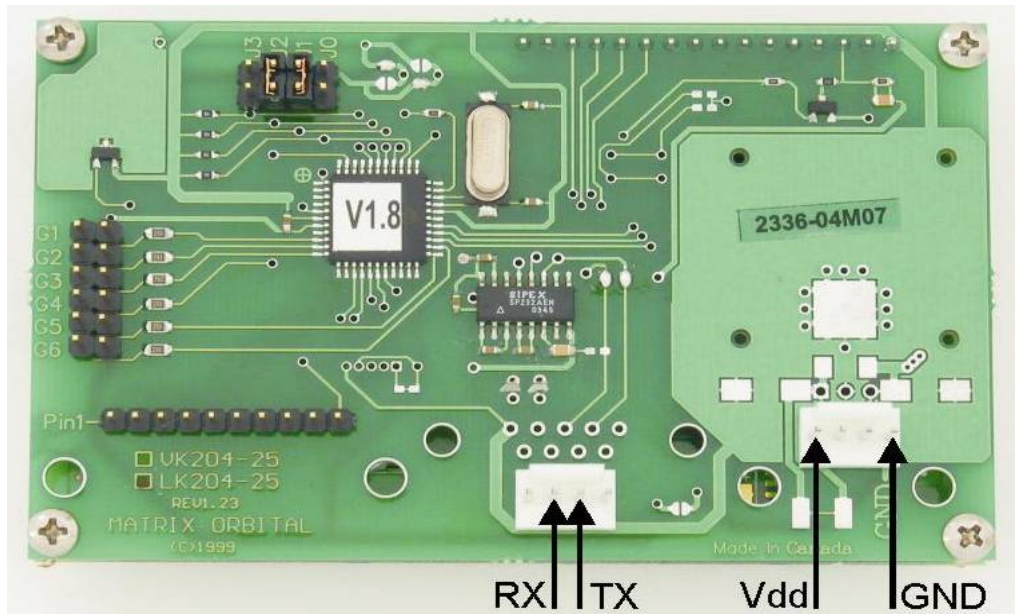


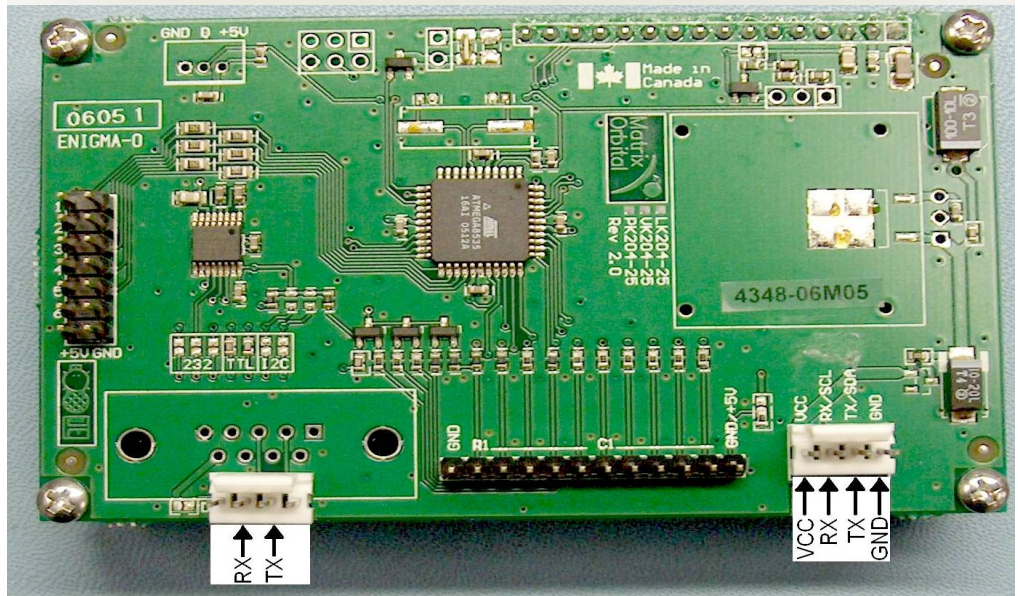
## Errata for LK-204-25

Thank you for purchasing the LK-204-25 LCD. This version of the LK-204-25 from Matrix Orbital has been configured to be used with the BASIC Stamp®, SX, Javelin and Propeller Microcontrollers, which use TTL level serial rather than RS-232 (which your computer uses). The other key difference is the removal of the 9 pin serial connector. This will allow a user easier access to connect to the RX and TX pins. Please see below for the needed connections. If you have any other questions please contact technical support at the email or number above. Please confirm the revision PCB you have and refer to the appropriate diagram below.

REV 1.X PCB



REV 2.X PCB



NOTE: You may use either RX/TX pair, but only use one set or the other, not both.